

**VARIABLE MESSAGE BOARDS PROPOSED FOR THE CLOSURE OF MONTEFIORE STREET
ACCESS TO CATHERINE HILL BAY VIA FLOWERS DRIVE**

VMS
As Advanced
Notification for
Northbound Motorists

Panel 1

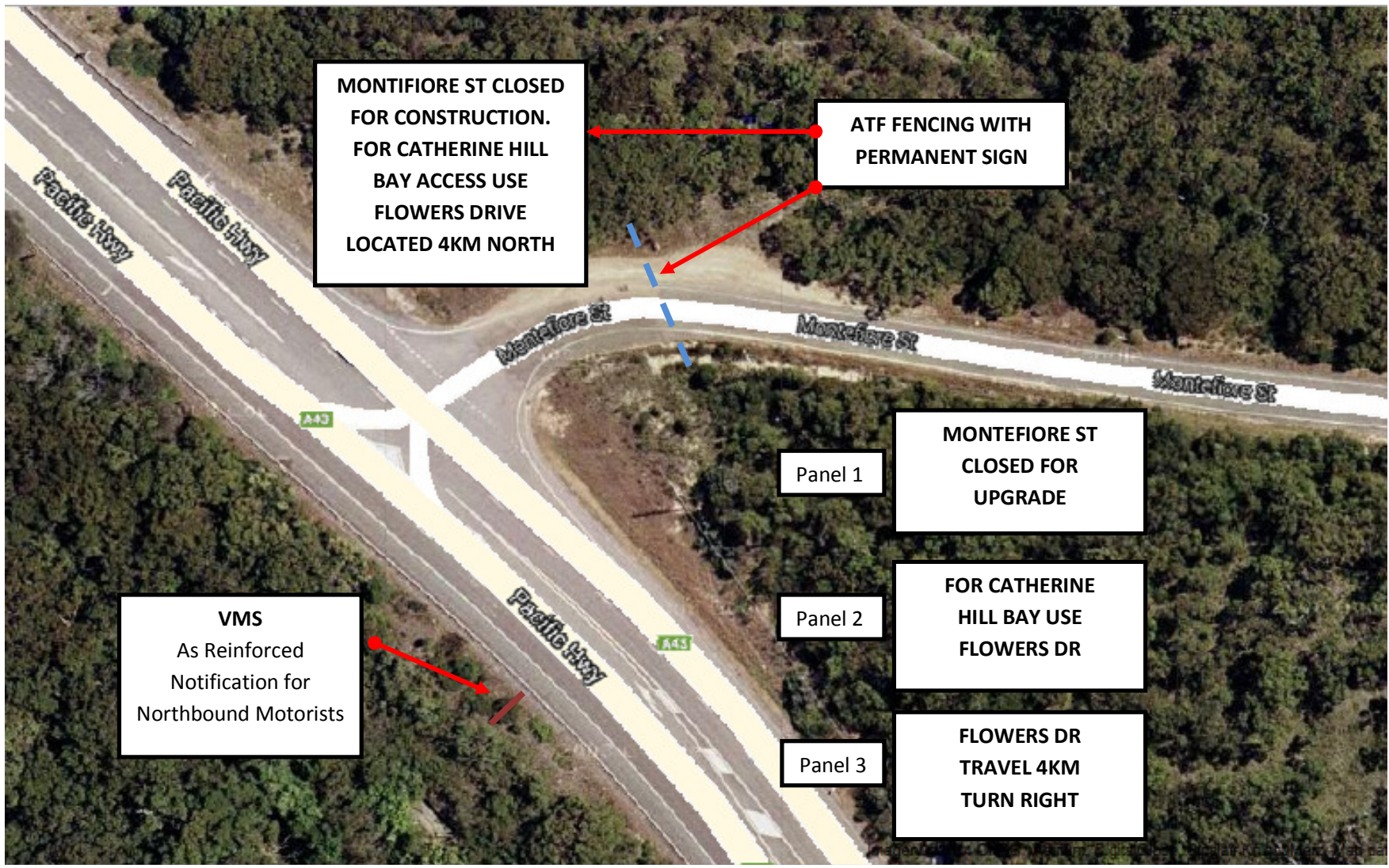
**IN 1KM
MONTEFIORE ST
CLOSED**

Panel 2

**FOR CATHERINE
HILL BAY USE
FLOWERS DR**

Panel 3

**FLOWERS DR
TRAVEL 5KM
TURN RIGHT**



MONTIFIORE ST CLOSED FOR CONSTRUCTION. FOR CATHERINE HILL BAY ACCESS USE FLOWERS DRIVE LOCATED 4KM NORTH

ATF FENCING WITH PERMANENT SIGN

MONTEFIORE ST CLOSED FOR UPGRADE

Panel 1

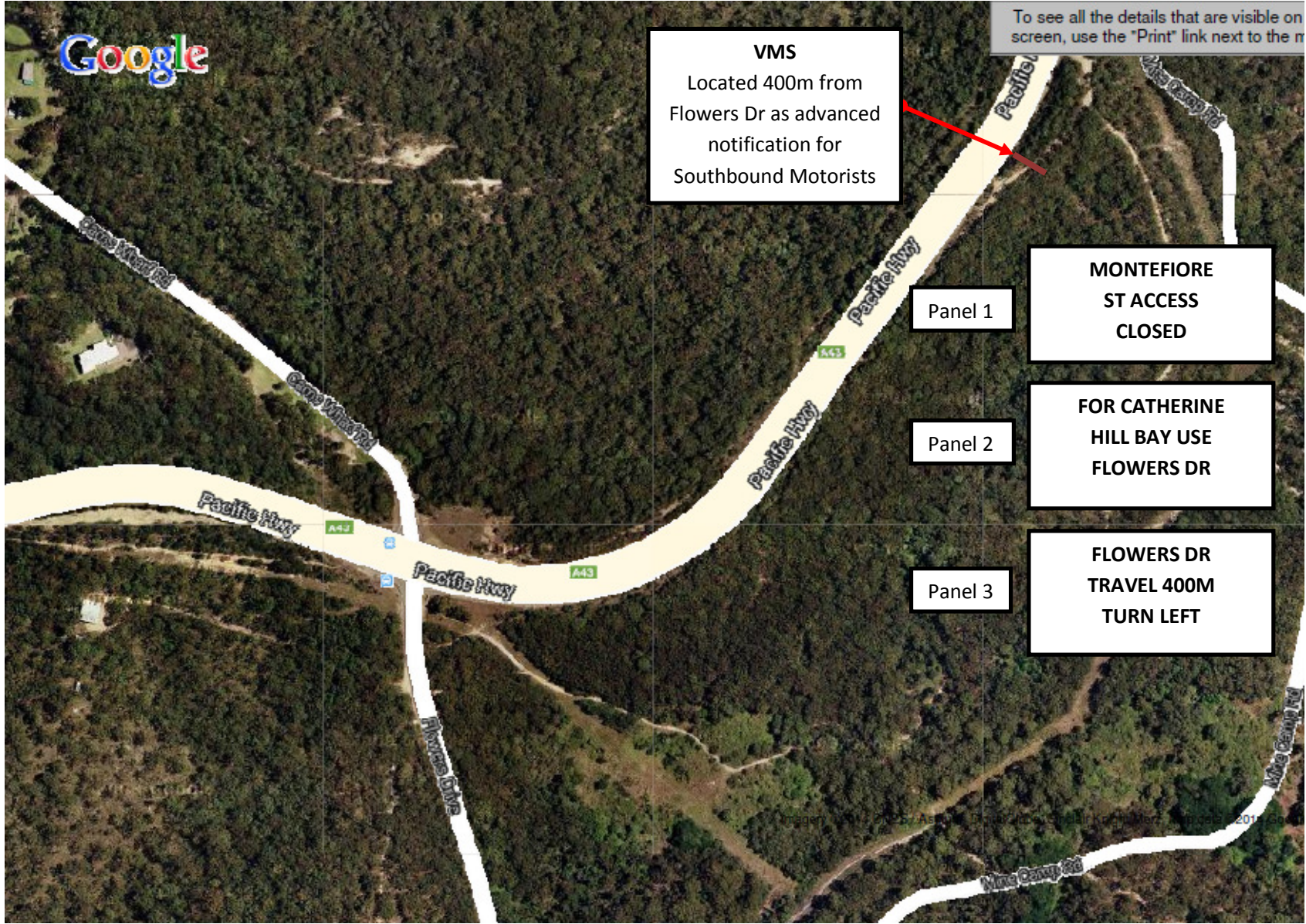
FOR CATHERINE HILL BAY USE FLOWERS DR

Panel 2

FLOWERS DR TRAVEL 4KM TURN RIGHT

Panel 3

VMS
As Reinforced Notification for Northbound Motorists



Google

To see all the details that are visible on screen, use the "Print" link next to the m

VMS
Located 400m from
Flowers Dr as advanced
notification for
Southbound Motorists

Panel 1

**MONTEFIORE
ST ACCESS
CLOSED**

Panel 2

**FOR CATHERINE
HILL BAY USE
FLOWERS DR**

Panel 3

**FLOWERS DR
TRAVEL 400M
TURN LEFT**

Notes:

Three Variable message boards proposed for 1 month from commencement of works. Following this, VMS boards to be replaced with temporary signage with same message. Proposed TCP will be for Montefiore St reconstruction which will be independent of WAD works at Pacific HWY intersection. If required, TCP will be amended to consider intersection works pending timing of projects.

One VMS for southbound traffic to notify that Montefiore Street is closed so consequently take the Flowers Drive access in 400m. This will prevent motorists passing Flowers Drive travelling 4km to Montefiore St and then having to double back to Flowers ie another 4km.

One VMS 1km in advance for Northbound traffic and a second VMS closer to the intersection. This will prevent traffic turning right into Montefiore Street, then having to do a U-Turn and continue northbound. Sufficient room at the mouth of Montefiore will be left to allow safe turning access should vehicles enter the neck of the intersection.

A large permanent sign will be attached to the ATF fencing confirming Montefiore Street is closed for construction purposes and will provide detail as to how to get to the alternate access at Flowers Drive.

No change to Pacific Hwy lane configuration or speed limits.